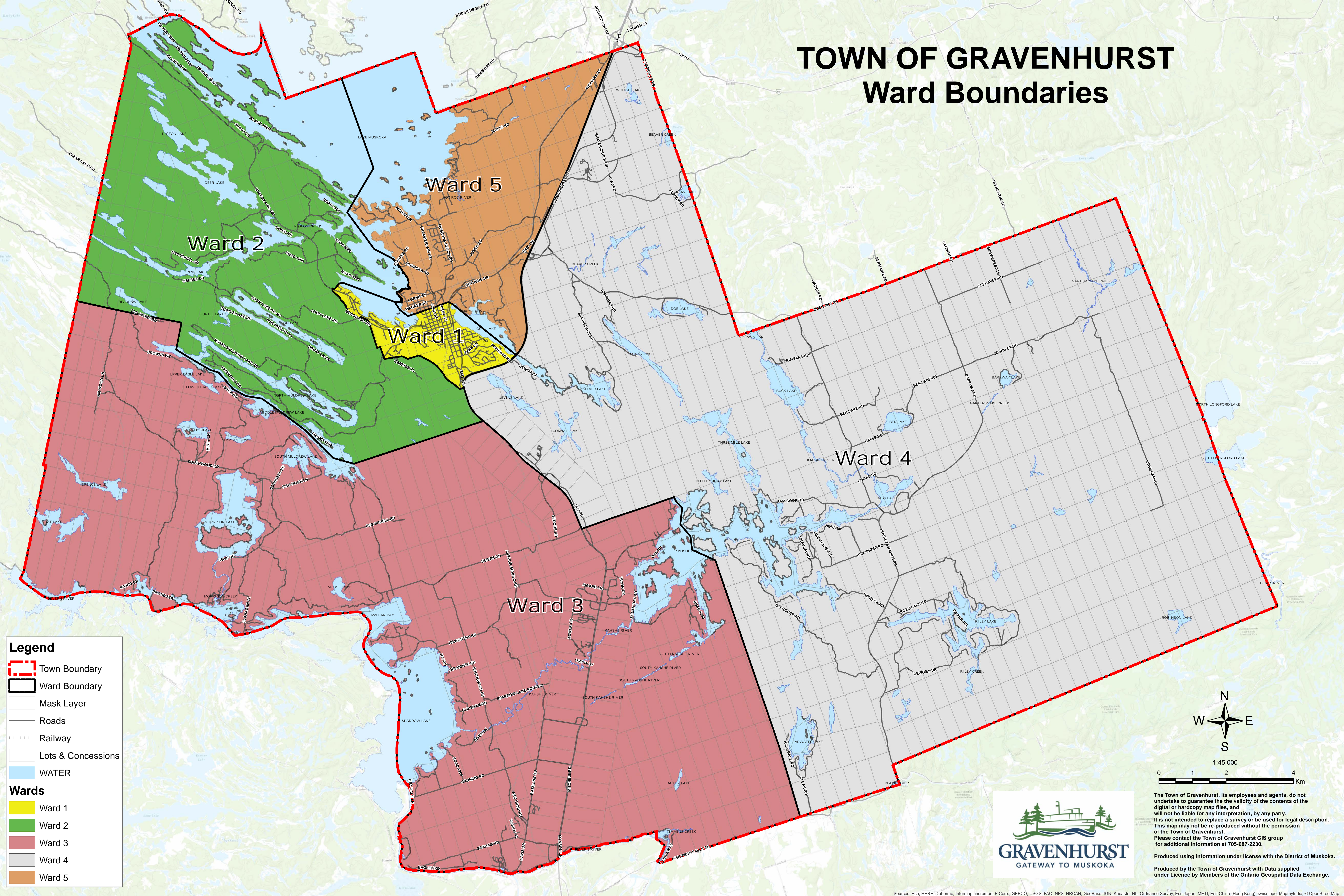


TOWN OF GRAVENHURST Ward Boundaries

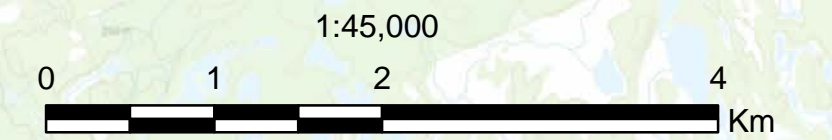


Legend

- Town Boundary
- Ward Boundary
- Mask Layer
- Roads
- Railway
- Lots & Concessions
- WATER

Wards

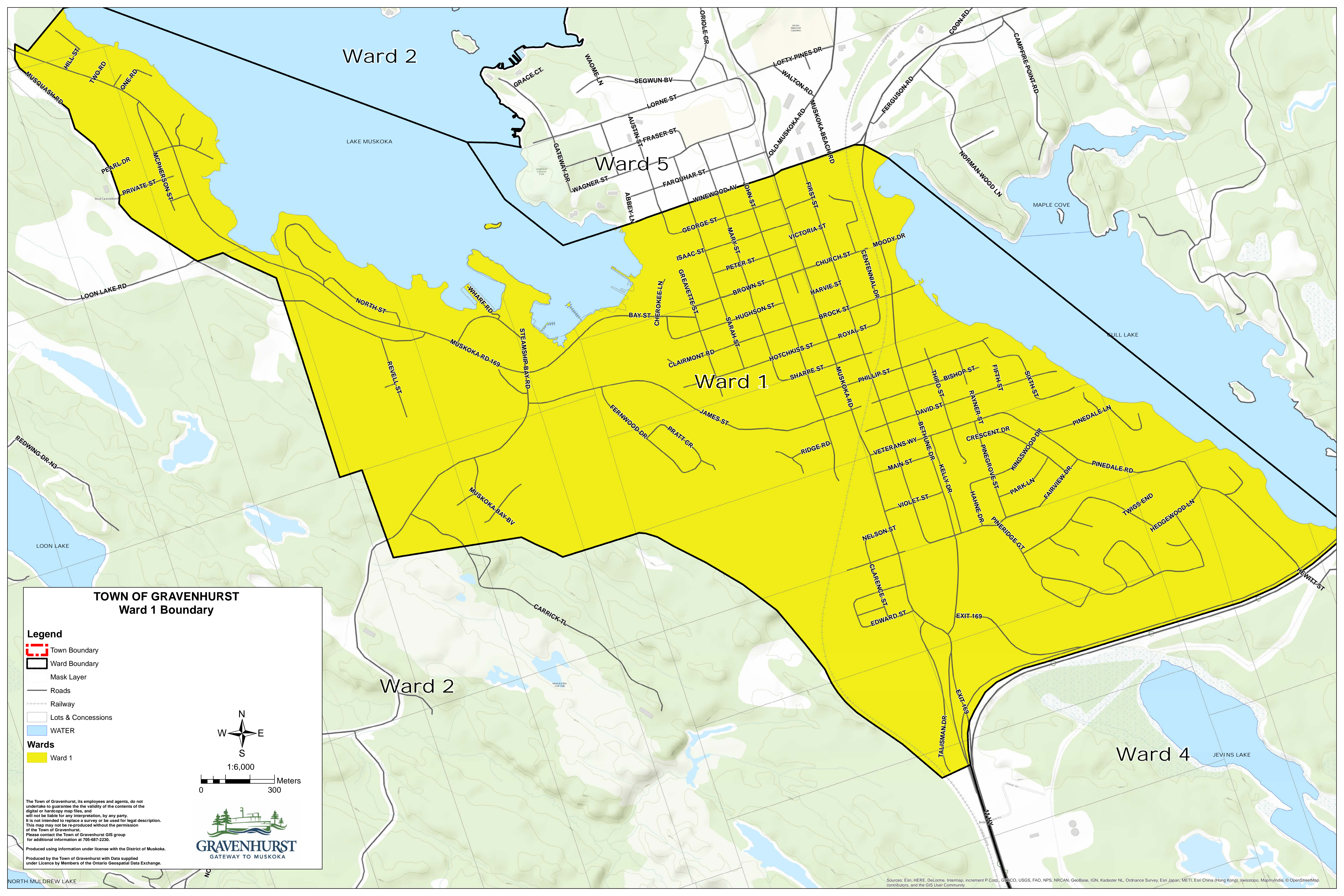
- Ward 1
- Ward 2
- Ward 3
- Ward 4
- Ward 5











The Town of Gravenhurst, its employees and agents, do not undertake to guarantee the validity of the contents of the digital or hardcopy map files, and will not be liable for any interpretation, by any party. It is not intended to replace a survey or be used for legal description. This map may not be re-produced without the permission of the Town of Gravenhurst. Please contact the Town of Gravenhurst GIS group for additional information at 705-687-2230.

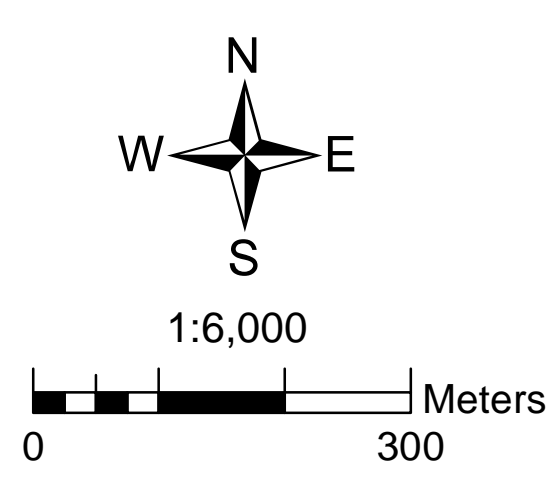
Produced using information under license with the District of Muskoka.
Produced by the Town of Gravenhurst with Data supplied under Licence by Members of the Ontario Geospatial Data Exchange.

Sources: Esri, HERE, DeLorme, Intermap, increment P Corp., GEBCO, USGS, FAO, NPS, NRCAN, GeoBase, IGN, Kadaster NL, Ordnance Survey, Esri Japan, METI, Esri China (Hong Kong), swisstopo, MapmyIndia, © OpenStreetMap contributors, and the GIS User Community



**TOWN OF GRAVENHURST
Ward 1 Boundary**

- Legend**
-  Town Boundary
 -  Ward Boundary
 -  Mask Layer
 -  Roads
 -  Railway
 -  Lots & Concessions
 -  WATER
 - Wards**
 -  Ward 1

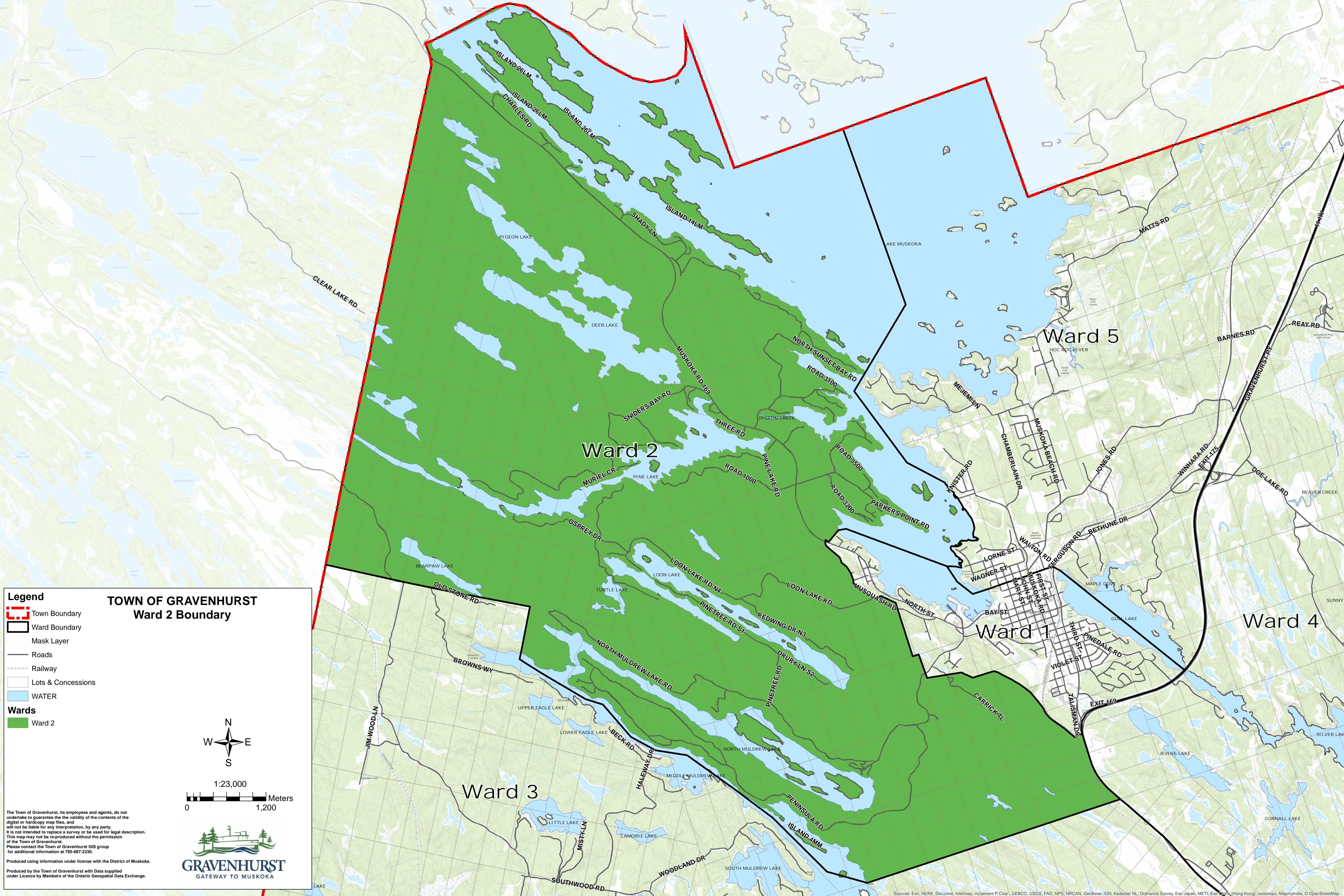


The Town of Gravenhurst, its employees and agents, do not undertake to guarantee the validity of the contents of the digital or hardcopy map files, and will not be liable for any interpretation, by any party. It is not intended to replace a survey or be used for legal description. This map may not be reproduced without the permission of the Town of Gravenhurst. Please contact the Town of Gravenhurst GIS group for additional information at 705-887-2230.

Produced using information under license with the District of Muskoka.

Produced by the Town of Gravenhurst with Data supplied under Licence by Members of the Ontario Geospatial Data Exchange.





Legend

- Town Boundary
- Ward Boundary
- Mask Layer
- Roads
- Railway
- Lots & Concessions
- WATER

Wards

- Ward 2

**TOWN OF GRAVENHURST
Ward 2 Boundary**

Scale: 1:23,000
0 1,200 Meters

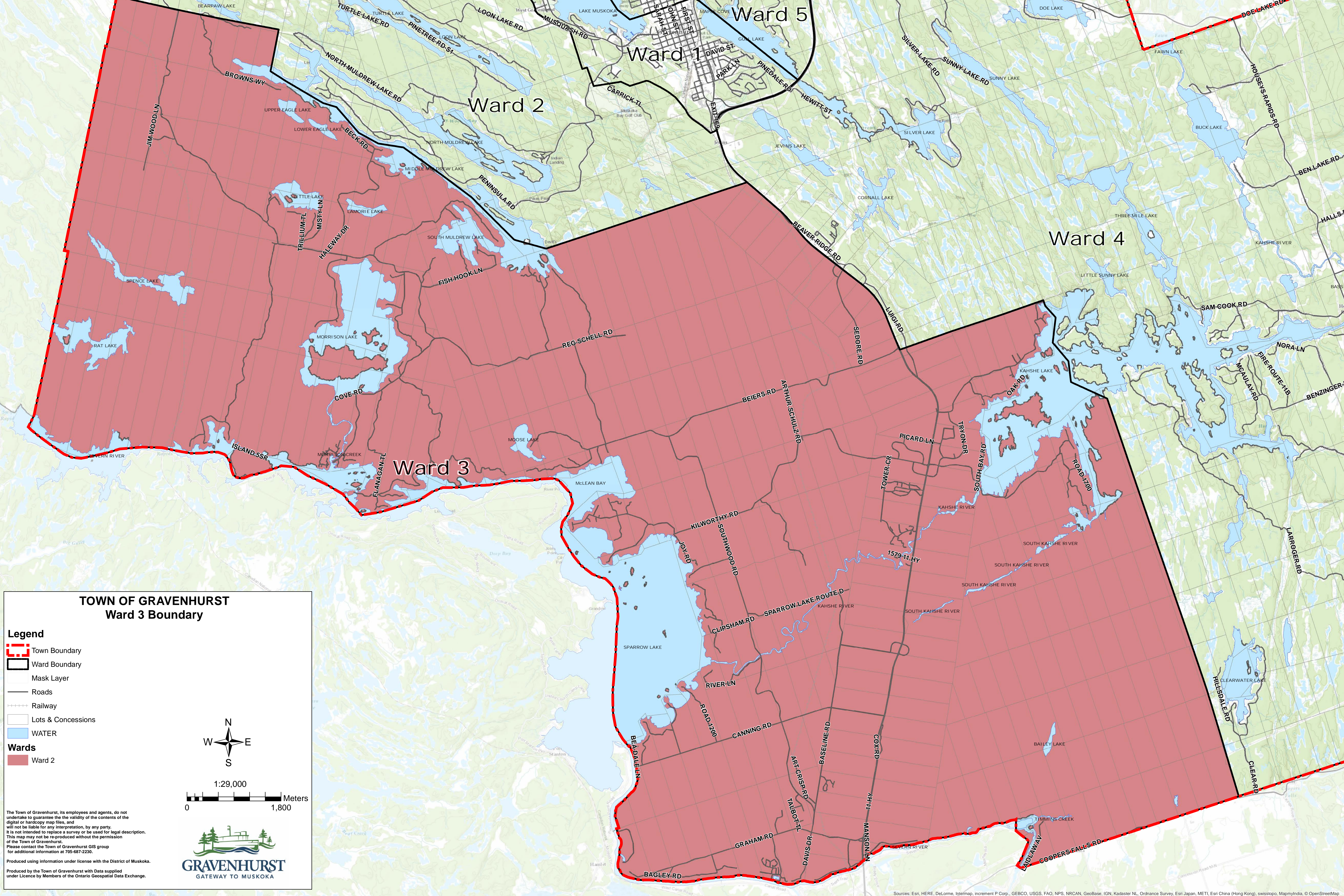
North Arrow: N, S, E, W

Gravenhurst Logo: GRAVENHURST GATEWAY TO MUSKOKA

The Town of Gravenhurst, its employees and agents, do not undertake to guarantee the validity of the contents of the digital or hardcopy map files, and will not be liable for any interpretation, by any party. It is not intended to replace a survey or be used for legal description. This map may not be reproduced without the permission of the Town of Gravenhurst. Please contact the Town of Gravenhurst GIS group for additional information at 705-887-2230.

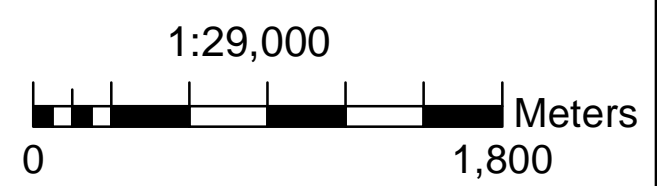
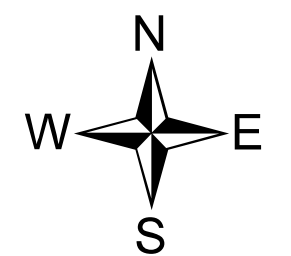
Produced using information under license with the District of Muskoka. Produced by the Town of Gravenhurst with Data supplied under Licence by Members of the Ontario Geospatial Data Exchange.

Sources: Esri, HERE, DeLorme, Intermap, increment P Corp., GEBCO, USGS, FAO, NPS, NRCAN, GeoBase, IGN, Kadaster NL, Ordnance Survey, Esri Japan, METI, Esri (China), Swisstopo, Mapbox India, © OpenStreetMap contributors, and the GIS User Community



**TOWN OF GRAVENHURST
Ward 3 Boundary**

- Legend**
- Town Boundary
 - Ward Boundary
 - Mask Layer
 - Roads
 - Railway
 - Lots & Concessions
 - WATER
 - Wards**
 - Ward 2

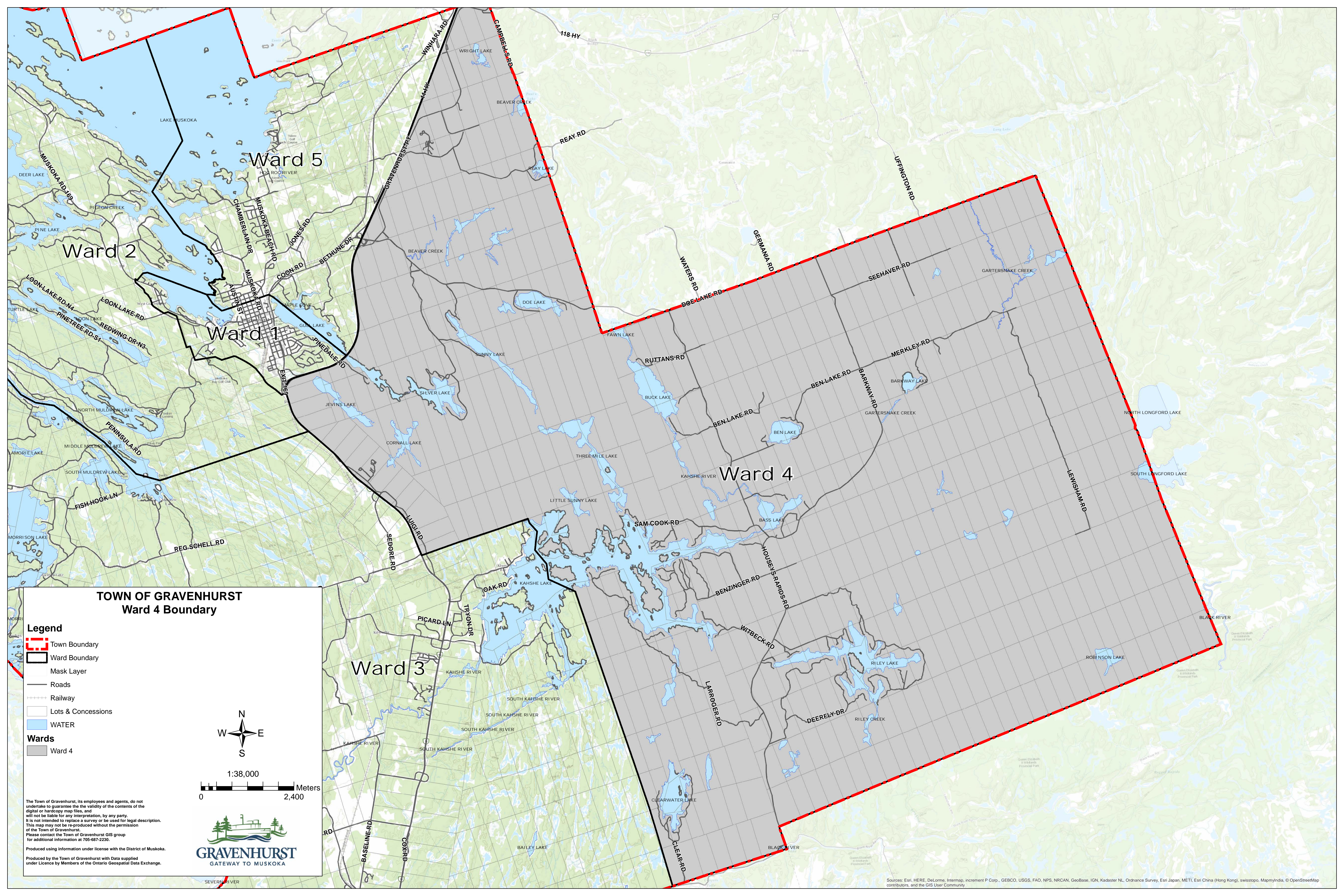


The Town of Gravenhurst, its employees and agents, do not undertake to guarantee the validity of the contents of the digital or hardcopy map files, and will not be liable for any interpretation, by any party. It is not intended to replace a survey or be used for legal description. This map may not be reproduced without the permission of the Town of Gravenhurst. Please contact the Town of Gravenhurst GIS group for additional information at 705-887-2230.



Produced using information under license with the District of Muskoka. Produced by the Town of Gravenhurst with Data supplied under Licence by Members of the Ontario Geospatial Data Exchange.

Sources: Esri, HERE, DeLorme, Intermap, increment P Corp., GEBCO, USGS, FAO, NPS, NRCAN, GeoBase, IGN, Kadaster NL, Ordnance Survey, Esri Japan, METI, Esri China (Hong Kong), swisstopo, MapmyIndia, © OpenStreetMap contributors, and the GIS User Community



TOWN OF GRAVENHURST Ward 4 Boundary

Legend

- Town Boundary
- Ward Boundary
- Mask Layer
- Roads
- Railway
- Lots & Concessions
- WATER

Wards

- Ward 4

1:38,000

0 2,400 Meters

The Town of Gravenhurst, its employees and agents, do not undertake to guarantee the validity of the contents of the digital or hardcopy map files, and will not be liable for any interpretation, by any party. It is not intended to replace a survey or be used for legal description. This map may not be reproduced without the permission of the Town of Gravenhurst. Please contact the Town of Gravenhurst GIS group for additional information at 705-887-2230.

GRAVENHURST
GATEWAY TO MUSKOKA

Produced using information under license with the District of Muskoka.
 Produced by the Town of Gravenhurst with Data supplied under Licence by Members of the Ontario Geospatial Data Exchange.

TOWN OF GRAVENHURST Ward 5 Boundary

Legend

- Town Boundary
- Ward Boundary
- Mask Layer
- Roads
- Railway
- Lots & Concessions
- WATER

Wards

- Ward 5

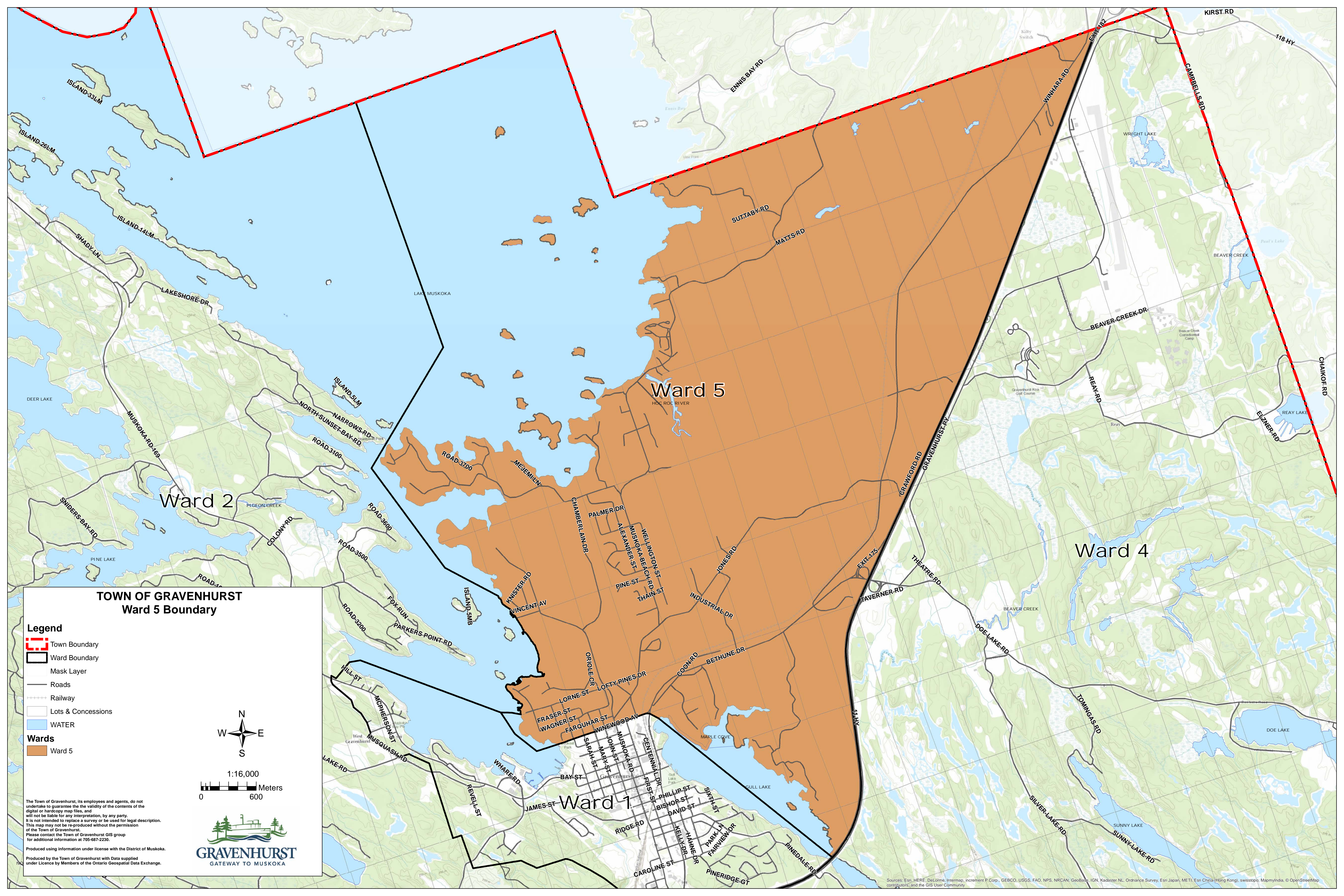
1:16,000

0 600 Meters

GRAVENHURST
GATEWAY TO MUSKOKA

The Town of Gravenhurst, its employees and agents, do not undertake to guarantee the validity of the contents of the digital or hardcopy map files, and will not be liable for any interpretation, by any party. It is not intended to replace a survey or be used for legal description. This map may not be reproduced without the permission of the Town of Gravenhurst. Please contact the Town of Gravenhurst GIS group for additional information at 705-887-2230.

Produced using information under license with the District of Muskoka. Produced by the Town of Gravenhurst with Data supplied under Licence by Members of the Ontario Geospatial Data Exchange.



Sources: Esri, HERE, DeLorme, Intermap, increment P Corp., GEBCO, USGS, FAO, NPS, NRCAN, GeoBase, IGN, Kadaster NL, Ordnance Survey, Esri Japan, METI, Esri China (Hong Kong), swisstopo, Mapbox India, © OpenStreetMap contributors, and the GIS User Community